

Shelby County Annual Report

2023



Shelby County Educational Events

- ServSafe for Food Service
- Cottage Food Safety Certificate Course
- Master Gardeners
- Restricted-Use Pesticide Classes
- Local Growers Permits
- Cotton Production Meeting
- Food Preparation
- Food Preservation
- Gardening Programs
- Grow More Give More
- Identity Theft Programs
- Integrated Pest Management
- Nature Journaling Workshop
- Diabetes Education and Empowerment Program (DEEP)
- Pond Management
- Financial Management and Budgeting Classes
- Raised Beds for Seniors
- Private Pesticide License Training and Certification



Resource Areas Serving Shelby County



4-H & Youth

- In-School Clubs
- Summer Camp
- Enrichment Programs
- Horse Club
- Youth Council
- Alabama Water Watch
- Tech Changemakers
- Archery
- Great Outdoors Club
- Fine Arts Club

Agriculture

- Home Grounds
- Commercial Agriculture
- Agronomic Crops
- Livestock and Poultry

Family & Health

- Food Safety & Quality
- Money Management
- Nutrition Education

Natural Resources

- Wildlife/Forestry
- Pond Management

Community Development

- Workforce Development
- Job Skills
- Community Development

Alabama Cooperative Extension System

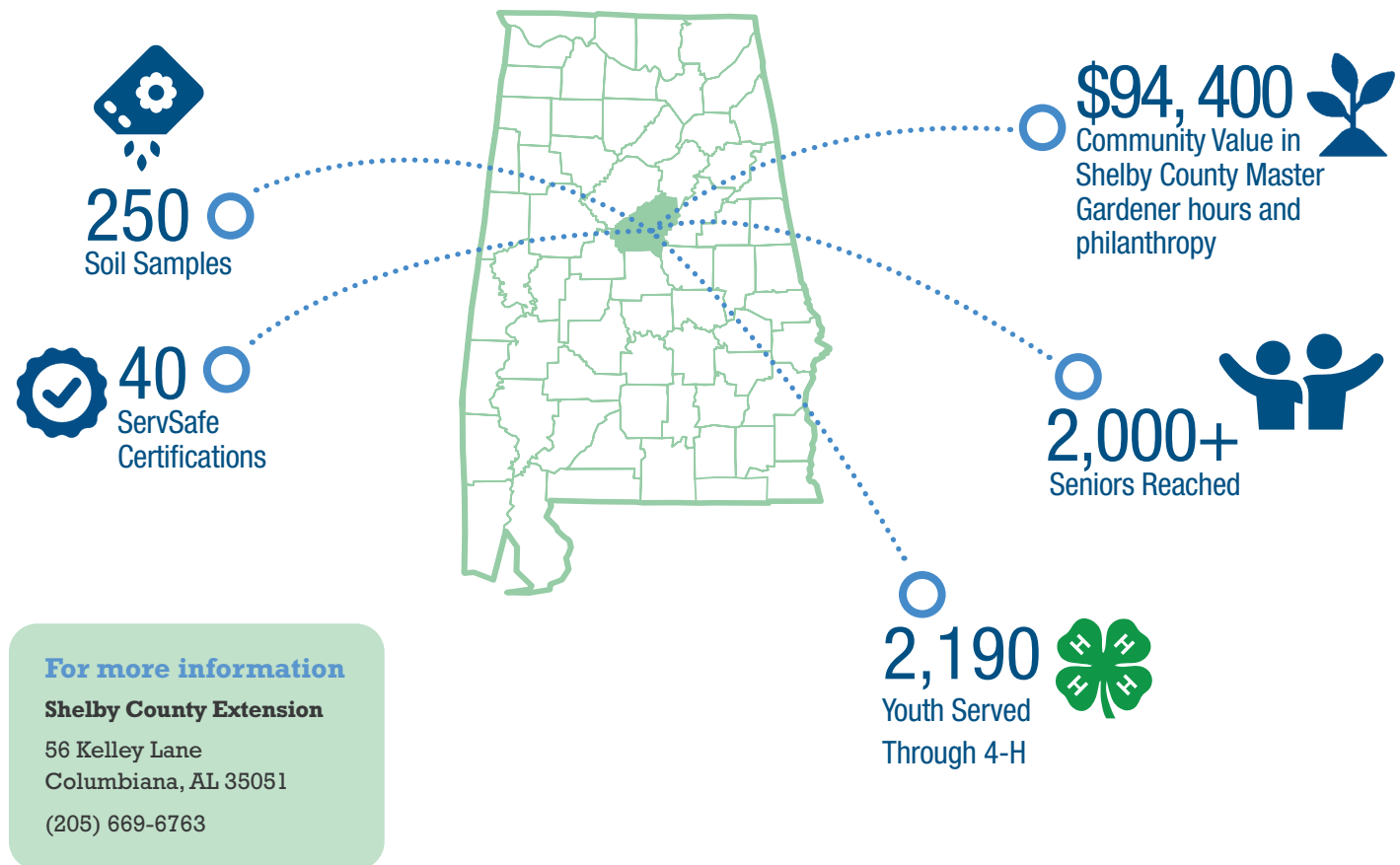
Ongoing Partnerships & Community Education Outreach

- Shelby County Commission
- CAWACO RC&D
- Shelby County Schools
- Alabaster City Schools
- Pelham City Schools
- Alabaster Library
- Pelham Library
- Wilsonville Library
- Harpersville Library
- Alabaster Senior Center
- Heardmont Park Senior Center
- Shelby County Park and Recreation Authority (SCPORA)
- Shelby County Chamber of Commerce
- Shelby County Cattlemen's Association
- Shelby County Farmers Federation
- Shelby County Soil and Water Conservation
- Alabama Forestry Commission
- Discovery Shelby
- Shelby County RSVP
- The Shelby County Reporter
- Shelby County Drug Task Force

Increasing Quality of Life for Alabamians with Research-Based Information

- 4-H'ers are four times more likely to give back to their communities and two times more likely to make healthy choices.

One Year by the Numbers



Alabama Extension is an equal opportunity educator, employer, and provider. If you need a reasonable accommodation or language access services, contact ACES Human Resources at aceshr@aces.edu or (334) 844-5531. **New June 2024, ACES-2804**

© 2024 by the Alabama Cooperative Extension System. All rights reserved.

www.aces.edu